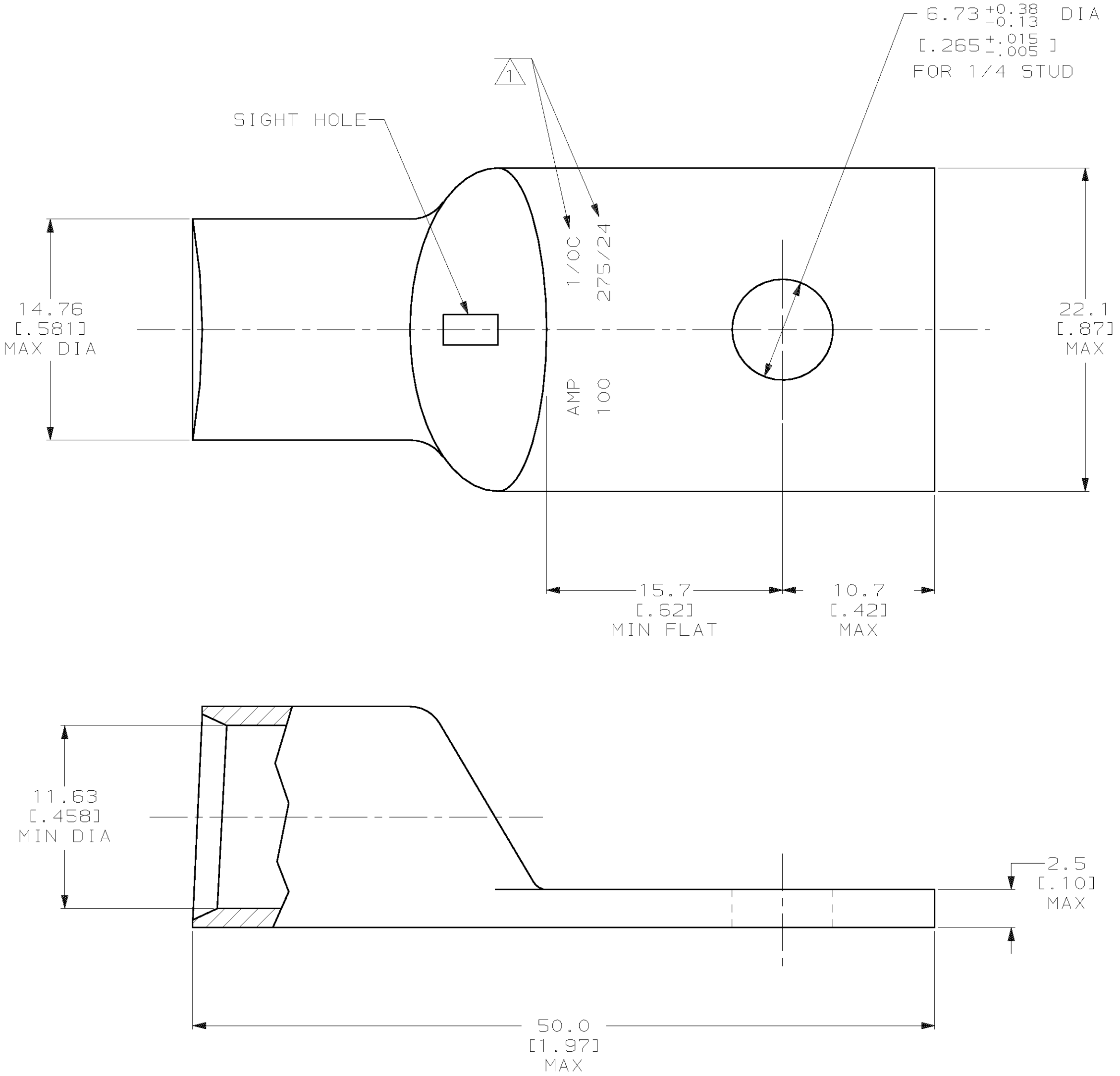


THIS DRAWING IS UNPUBLISHED. RELEASED FOR PUBLICATION, 19 .
 © COPYRIGHT 19 BY AMP INCORPORATED. ALL INTERNATIONAL RIGHTS RESERVED.

LOC	DIST	P	F	ZONE	LTR	DESCRIPTION	DATE	APPD
G	86					Y REV PER 0G3A-0561-01	07OCT02	JR HS

METRIC
 DIMENSIONS LISTED IN mm [INCHES]



1 STAMP AMP 1/0C 100 275/24 APPROX AS SHOWN

325301

<p>AMP INCORPORATED CUSTOMER SERVICE SYSTEMS</p>		<p>MAX RECOMMENDED OPERATING TEMPERATURE: 170°C MAX</p>	<p>DO NOT SCALE PRINT. UNLESS SPECIFIED DIMENSIONS IN mm [INCHES] TOLERANCES ON: 2 PLC DEC ± 0.20 [.008] 3 PLC DEC ± - ANGLES ± -</p>	<p>DR 30AUG94 DK SCHRUM CHK 31AUG94 AJ KAUFMAN APPD 31AUG94 RE ROSER APPD 31AUG94 JL MECKLEY PRODUCT SPEC - APPLICATION SPEC - WEIGHT -</p>	<p>AMP AMP Incorporated Harrisburg, PA 17105-3608</p>
<p>FOR ADDITIONAL PRODUCT INFORMATION OR COPIES OF DRAWINGS AND TECHNICAL DOCUMENTS</p>	<p>PRODUCT INFORMATION CENTER 1-800-522-6752</p>	<p>VOLTAGE RATING: NOT APPLICABLE</p>	<p>MATERIAL COPPER PER ASTM B-75 ANNEALED</p>	<p>FINISH TIN PLATE 0.00381 [.000150] MIN THK PER MIL-T-10727</p>	<p>NAME TERMINAL, AMPOWER, WIRE SIZE: 1/0 AWG</p>
<p>FOR APPLICATION TOOLING INFORMATION</p>	<p>TOOLING ASSISTANCE CENTER 1-800-722-1111</p>	<p>WIRE CROSS SECTIONAL AREA RANGE: 42.41-60.55mm² [83,700-119,500] CIR MILS STRANDED</p>	<p>THIS DRAWING IS A CONTROLLED DOCUMENT FOR AMP INCORPORATED. IT IS SUBJECT TO CHANGE AND THE CONTROLLING ENGINEERING ORGANIZATION SHOULD BE CONTACTED FOR THE LATEST REVISION.</p>	<p>SIZE C 00779</p>	<p>DRAWING NO C-325301</p>
<p>FOR ORDER ENTRY</p>	<p>1-800-526-5142</p>			<p>SCALE 4:1</p>	<p>SHEET 1 OF 1</p>